

NOTE: DO NOT DISCARD the Parts List from the Instruction Bulletin. Place the Parts List in the appropriate place in the machine manual for future reference. Retaining the Parts List will make it easier to reorder individual parts and will save the cost of ordering an entire kit.

NOTE: Numbers in parenthesis () are reference numbers for parts listed in Bill of Materials.

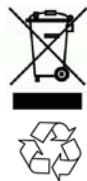
Installation instructions for **kit number 9008139**

SYNOPSIS:

This kit contains the parts needed to install a strobe light / backup alarm kit on T16 machines. Please follow step-by-step instructions.

SPECIAL TOOLS / CONSIDERATIONS: NONE

(Estimated time to complete: 1.5 hours)



PROTECT THE ENVIRONMENT

Please dispose of packaging materials, used machine components such as batteries and fluids in an environmentally safe way according to local waste disposal regulations.

Always remember to recycle.

PREPARATION:

1. Park the machine on a clean level surface, turn off the machine, and remove the key.

FOR SAFETY: Before leaving or servicing machine, stop on level surface, turn off machine, and remove key.

2. Disconnect the battery cables from the batteries.

 **WARNING: Always disconnect battery cables from machine before working on electrical components.**

INSTALLATION:

1. Remove the plugs from the recovery tank cover and discard both plugs. (Fig. 1)

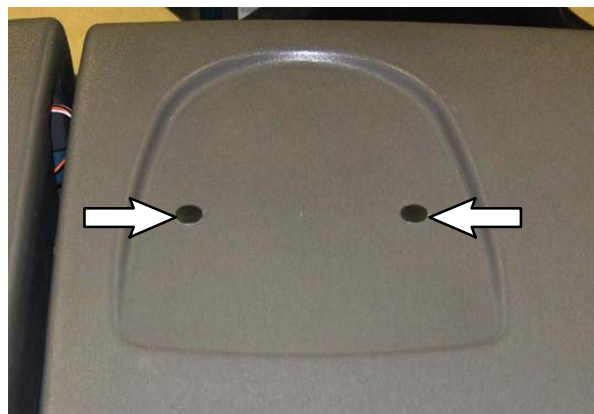


FIG. 1

2. Completely open the recovery tank cover and lock the cover open.

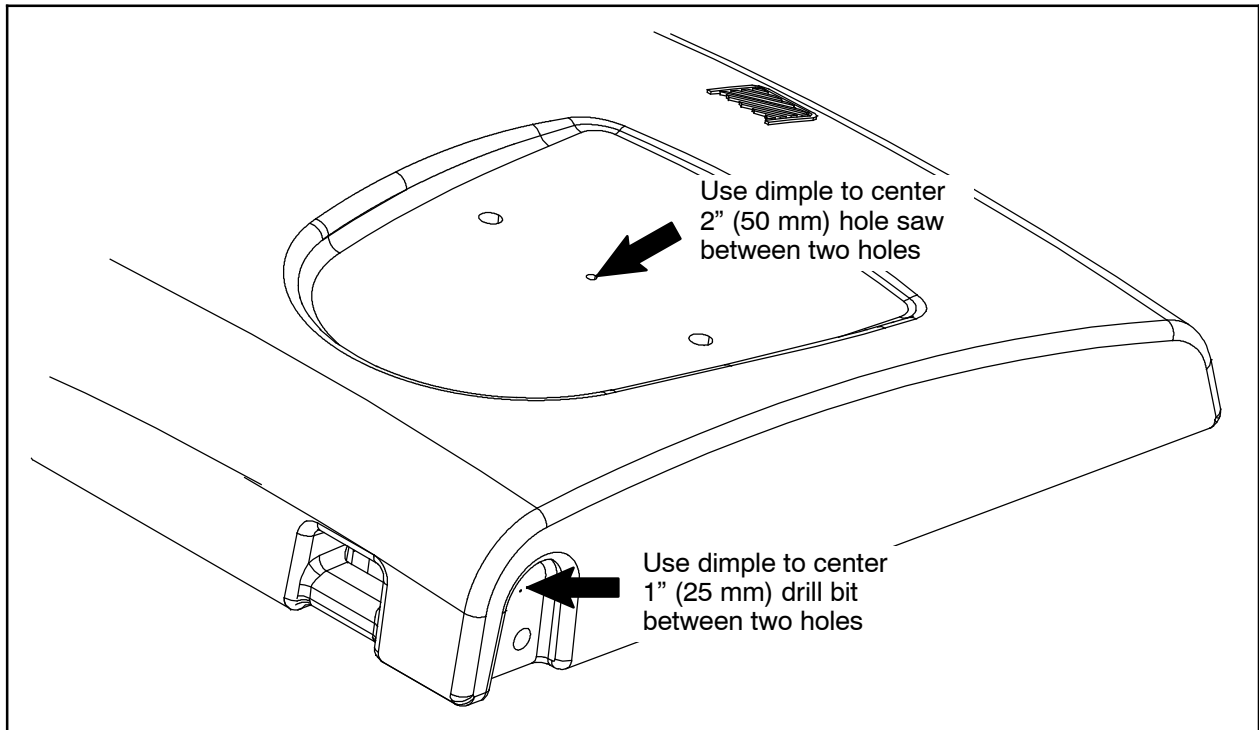


FIG. 2

NOTE: Use the dimple located in the recovery tank cover to center the hole saw on the cover.

3. Drill a 1" (25 mm) hole through the recovery tank cover. (Fig. 2 / Fig. 3)

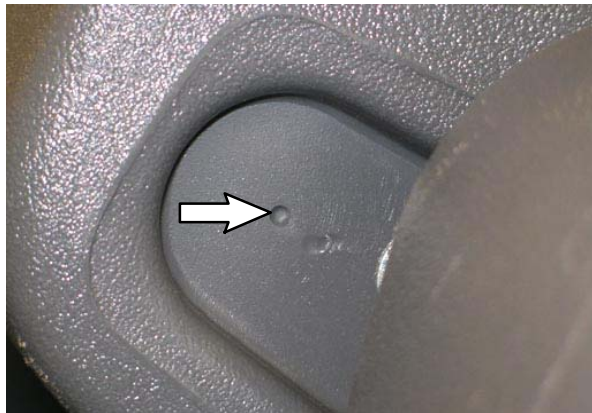


FIG. 3

4. Close the recovery tank cover.

NOTE: Use the dimple centered between the two holes in the recovery tank cover to center the hole saw on the cover. (Fig. 3)

5. Use a 2" (50 mm) hole saw to cut a hole through the top of the recovery tank cover. **Do Not** cut into the bottom of the recovery tank cover. (Fig. 2)

6. Use two M5 pan screws (14), two flat washers (15), and two M5 hex nuts (16) to install the light (1) onto the light module base (2). (Fig. 4)

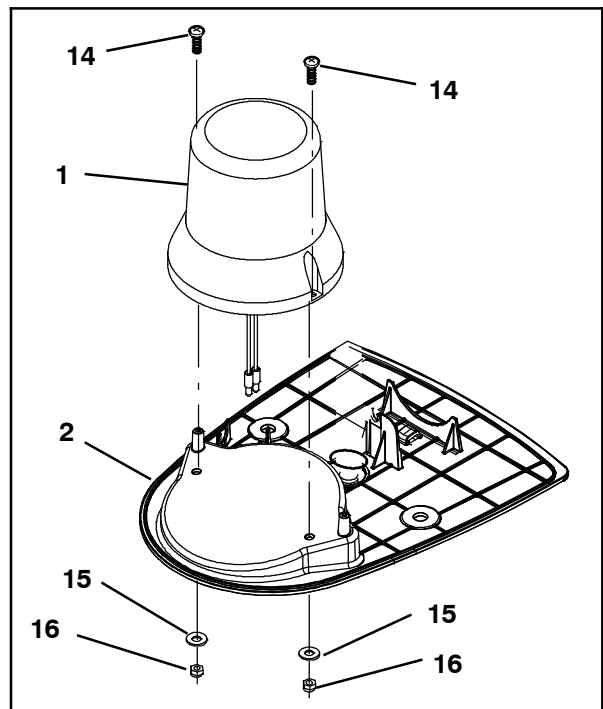


FIG. 4

- Use a cable tie (5), a hex screw (6), and a flat washer (7) to secure the backup alarm (4) to the light module base (2). (Fig. 5)

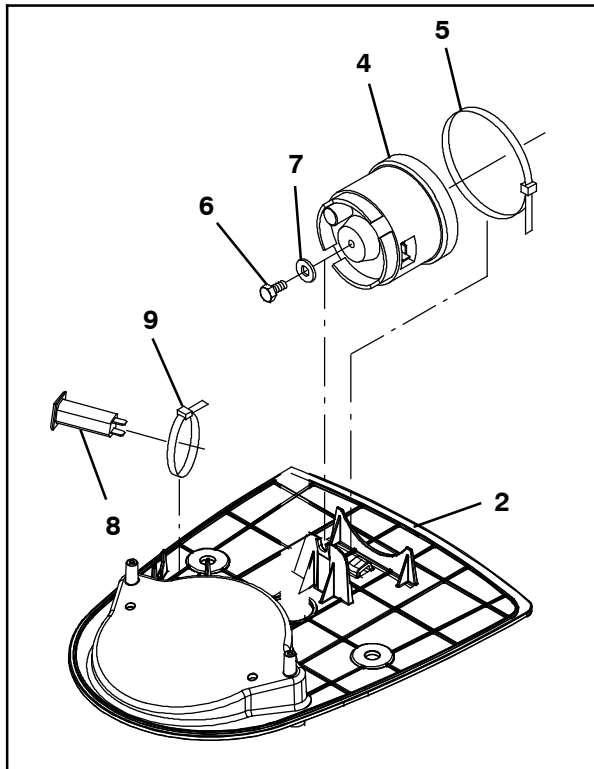


FIG. 5

- Use a cable tie (9) to secure one 2.5 Amp circuit breaker (8) to the light module base (2). (Fig. 5)

- Use two M8 hex screws (17) to install the light module base (2) and module base gasket (3) onto the recovery tank cover. (Fig. 6)

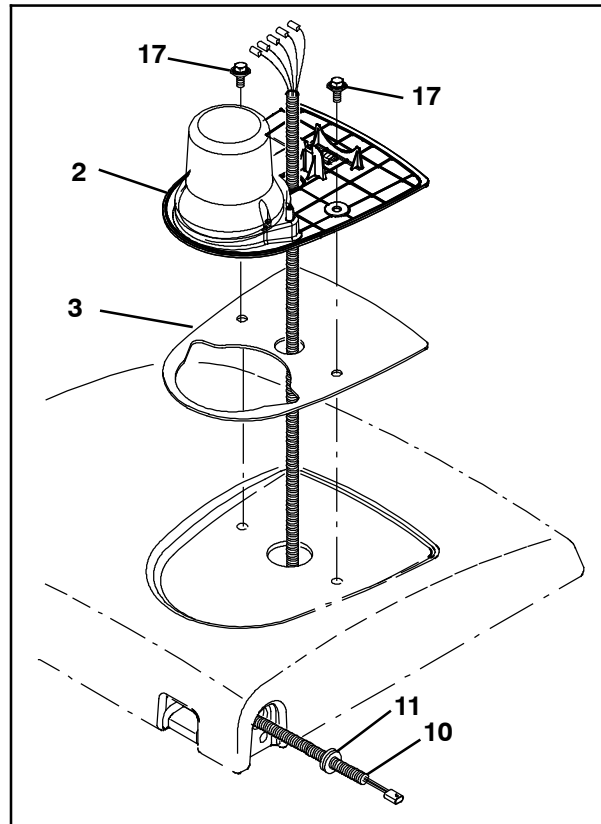


FIG. 6

- Route the end of the alarm / light wire harness (10) with the single connector down through the module base (2), module base gasket (3), the 2" (50 mm) hole in the recovery tank cover, and out the 1" (25 mm) hole in the recovery tank cover. (Fig. 6)
- Slide the rubber grommet (11) onto the alarm / light wire harness (10) and insert the grommet into the 1" (25 mm) hole in the recovery tank cover. (Fig. 6)

12. Route the alarm / light wire harness (10) down behind the operator seat and connect the alarm / light wire harness to the main wire harness connector located behind the operator seat. (Fig. 8 / Fig. 9)
13. Connect the alarm / light wire harness (10) to the light (1), backup alarm (4), and the 2.5 Amp circuit breaker (8). (Fig. 8 / Fig. 9)

14. Plug the 36VDC relay (12) into the alarm / light wire harness (10). (Fig. 7 / Fig. 8)

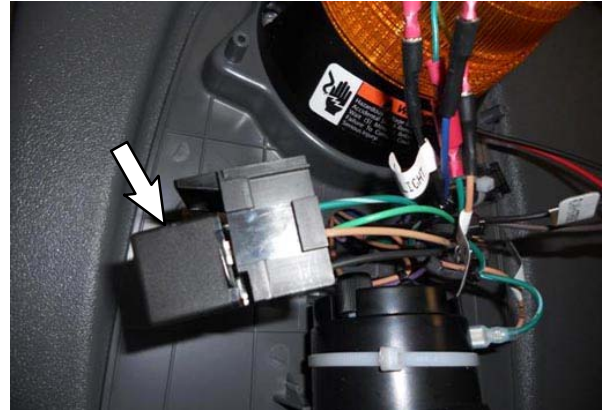


FIG. 7

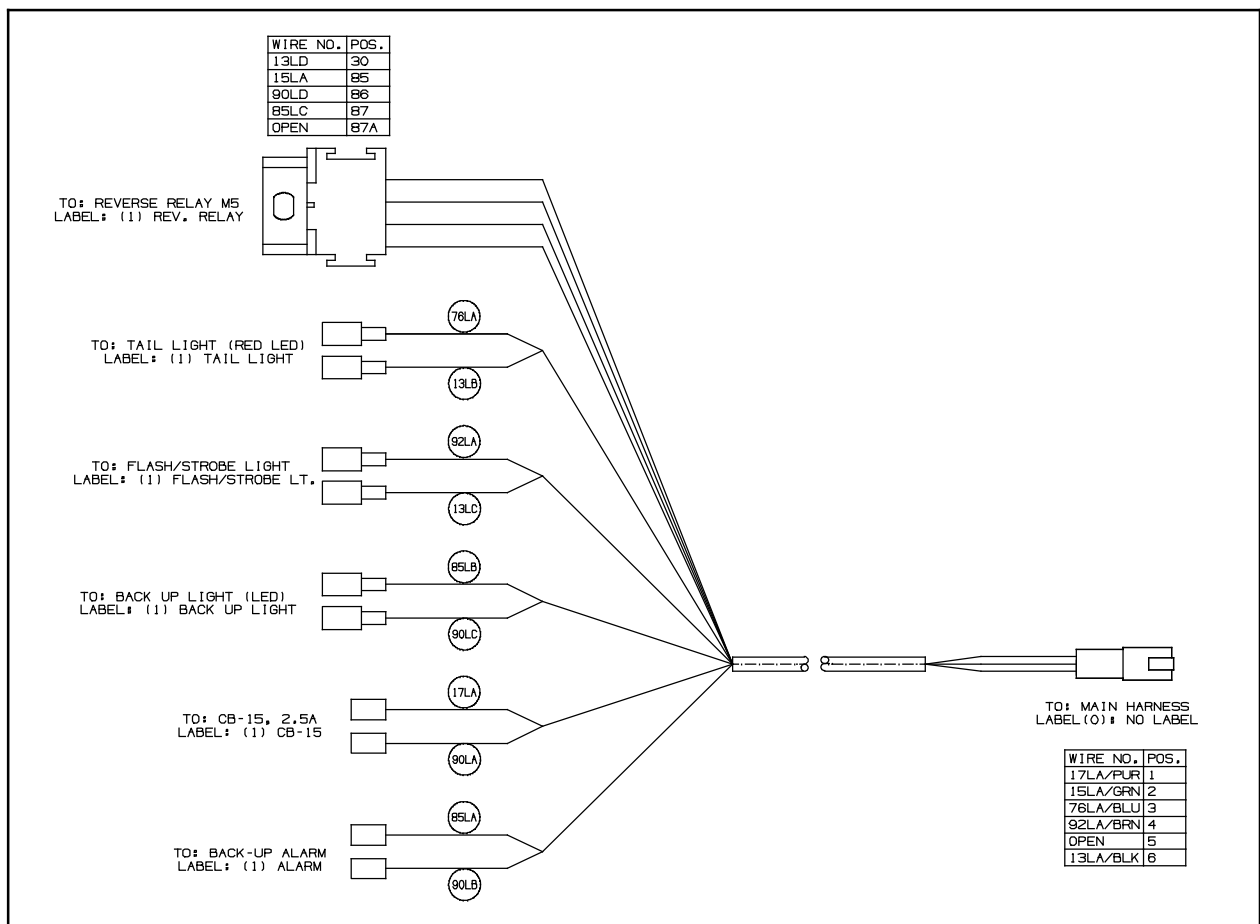


FIG. 8

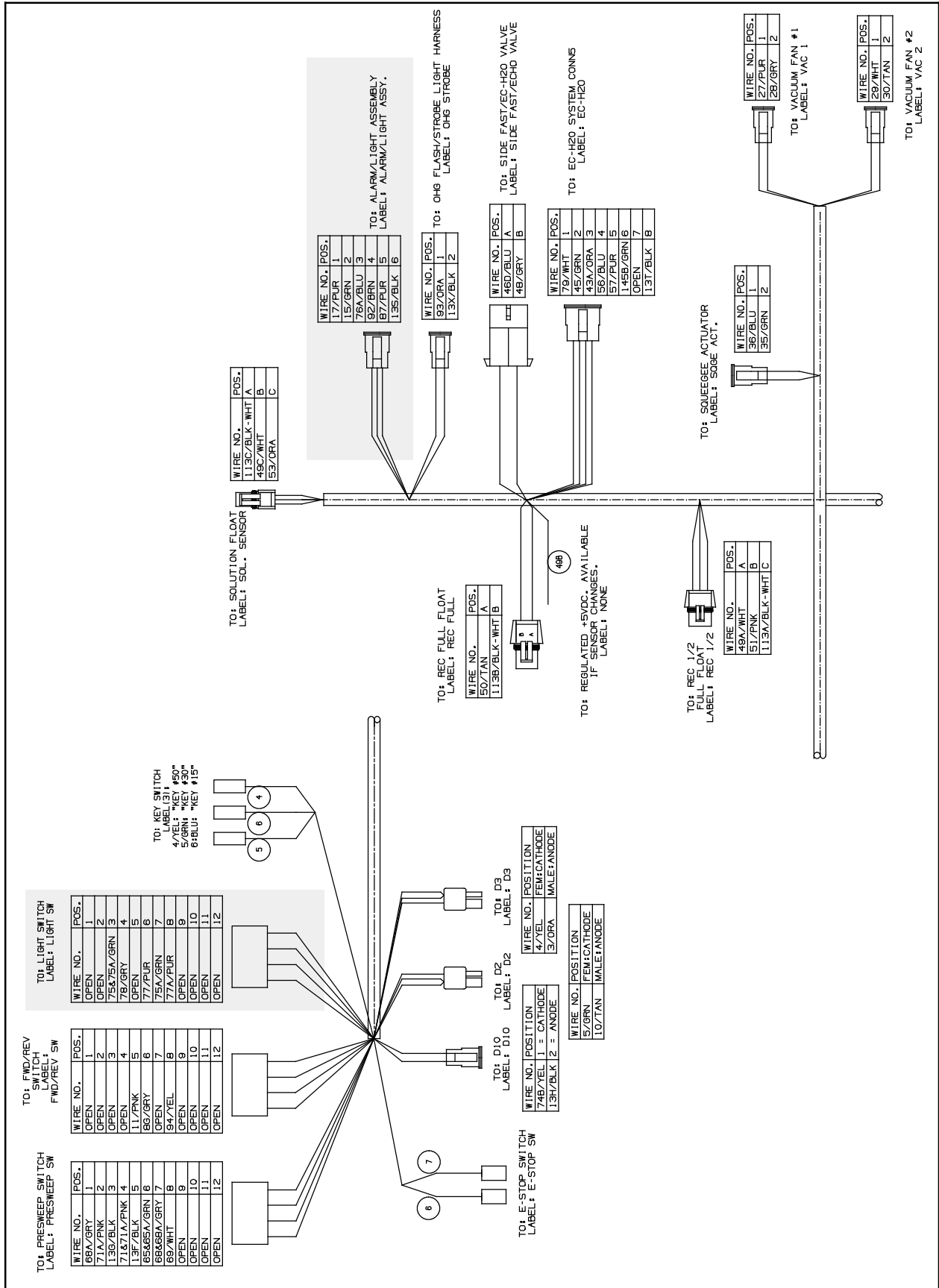


FIG. 9 - Main Wire Harness

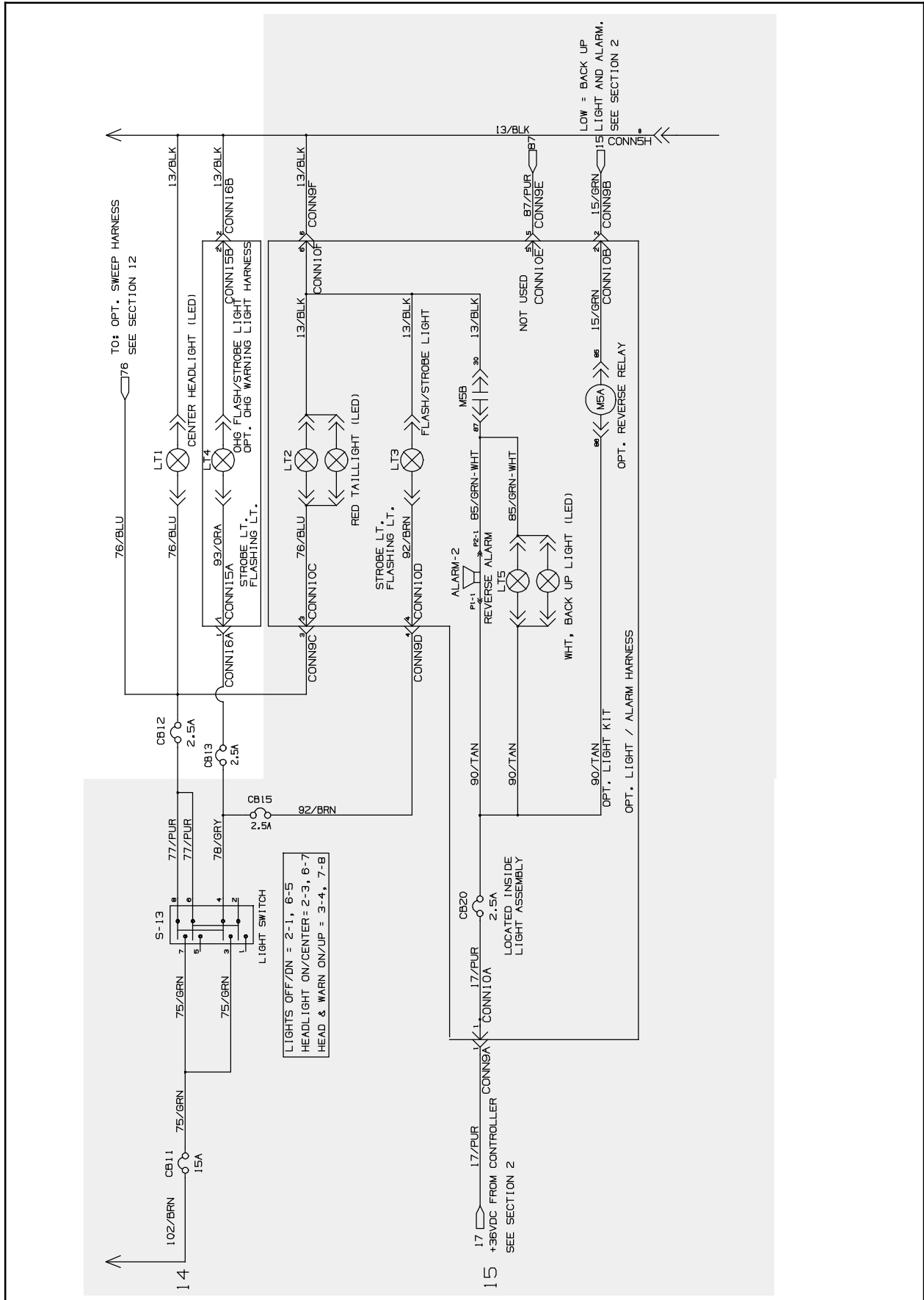


FIG. 10 - Schematic

15. Use two pan screws (20) to install each LED light assembly (19) onto the light module cover (18). (Fig. 11)

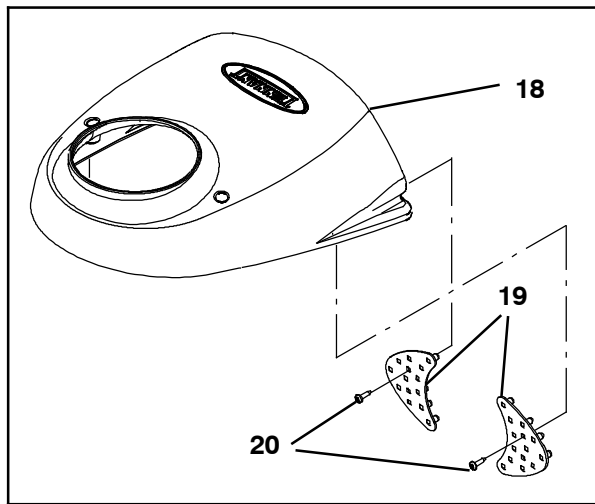


FIG. 11

16. Connect the alarm / light wire harness (10) to both LED light assemblies (19). (Fig. 8 / Fig. 10)

17. Use two pan screws (20) to install the light module cover (18) onto the rest of the light / alarm assembly. (Fig. 17)

18. Remove the hardware holding the left console panel to the front shroud and set the hardware aside. (Fig. 12)

19. Carefully pull the left console panel from the front shroud. Take care to not break any wire connections when pulling the panel from the shroud. (Fig. 12)

20. Remove the hole plug from the left console panel and discard the plug. Refer to Fig. 12.

21. Insert the switch (21) into the left console panel. (Fig. 12)

22. Connect the main wire harness to the switch (21). (Fig. 9)

23. Reinstall the left console panel onto the front shroud. (Fig. 12)

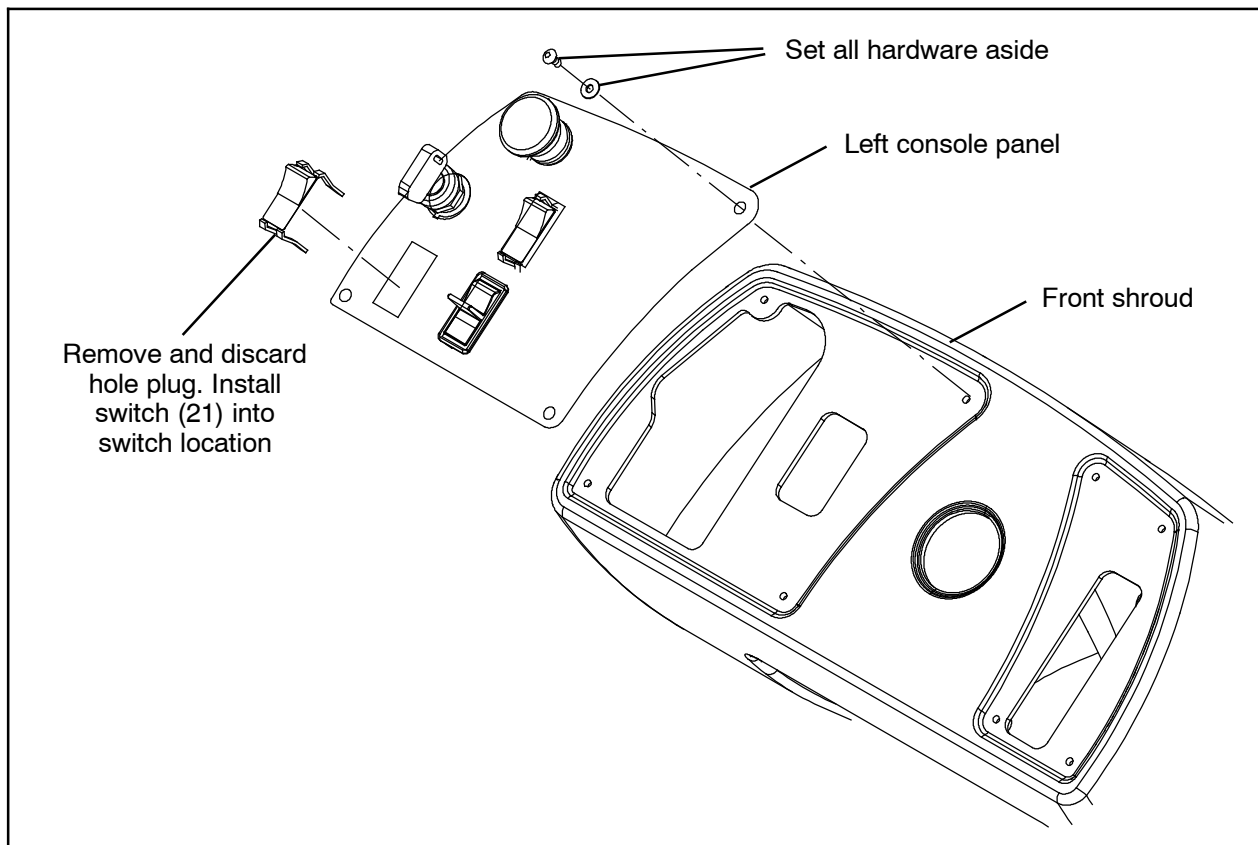


FIG. 12

24. Remove the hardware holding the electrical panel to the machine. Set the hardware aside. (Fig. 13)



FIG. 13

25. Carefully remove the electrical panel from the machine. Take care to not break any cable / wire connections when removing the panel.

26. Remove the blanks from the CB15 and CB11 locations on the electrical panel. (Fig. 14)

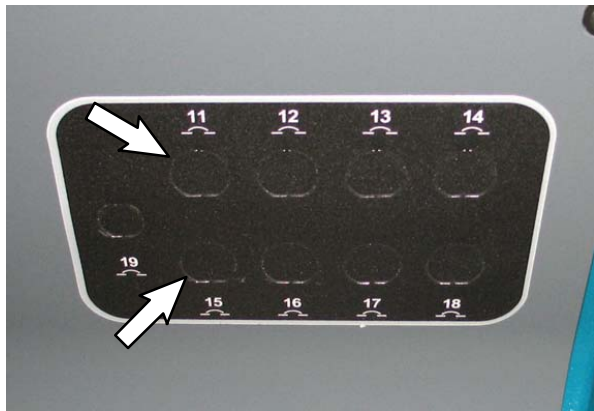


FIG. 14

27. Install a 2.5-Amp circuit breaker (8) and circuit breaker boot (22) into electrical panel CB15 location. (Fig. 15)

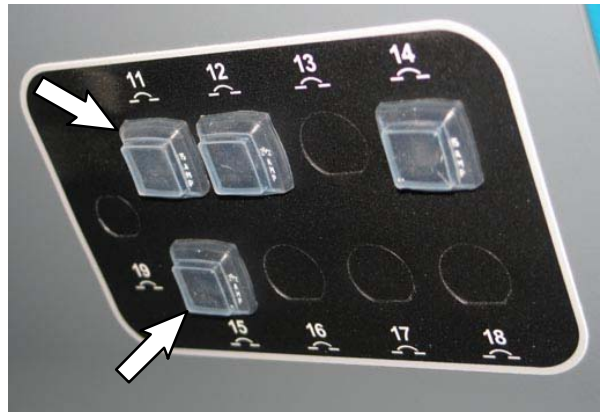


FIG. 15

28. Install a 15-Amp circuit breaker (25) and circuit breaker boot (22) into electrical panel CB15 location. (Fig. 11)

29. Connect the main wire harness to the 2.5 Amp circuit breaker (8) and 15-Amp circuit breaker (25) installed in the previous steps. (Fig. 15 / Fig. 16)

30. Reinstall the electrical panel onto the machine.

31. Reconnect the battery cables to the batteries.

32. Start and test the machine. Position the operating light / hazard light switch to the ON position and operate the machine in both the forward and reverse directions. The strobe light and red LED taillights should function when the lights are turned on and the white reverse LED lights and alarm should function when the machine is in reverse.

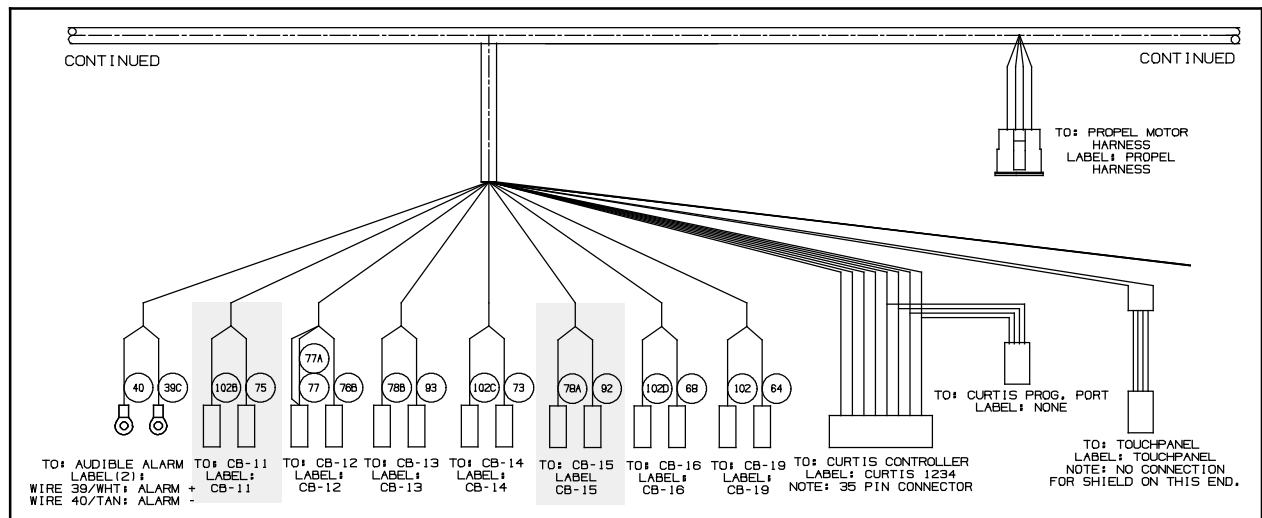


FIG. 16

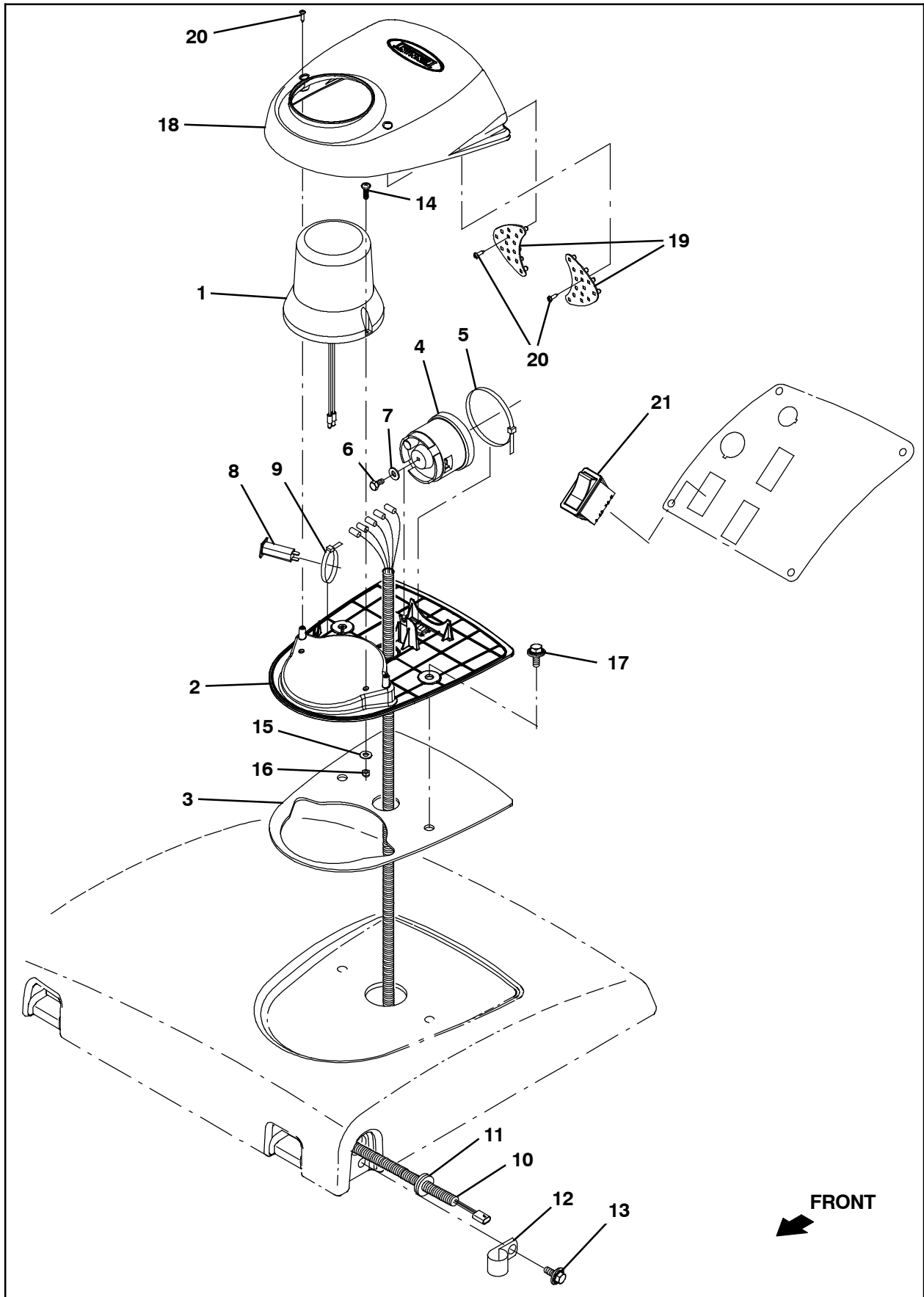


FIG. 17

Bill Of Materials For Light Kit, Strobe, CI [T16] - 9008139

	Ref.	Tennant Part No.	Description	Qty.
▽		9008139	Light Kit, Strobe, CI [T16]	1
▲	1	1017250	Light, Strobe, Amb, 12- 48VDC	1
▲	2	1059938	Base, Module, Light	1
▲	3	1063263	Gasket, Base, Module	1
▲	4	1058694	Alarm, Backup, 12- 48VDC, Adj	1
▲	5	49263	Tie, Cable, Nyl, 11.4L .19W 3.0 Max D	1
▲	6	19315	Screw, Hex, .25- 20 X 0.50, G5	1
▲	7	32483	Washer, Flat, 0.25, SAE	1
▲	8	1064184	Circuit Breaker, 02.5A, Resettable	2
▲	9	49266	Tie, Cable, Nyl, 07.3L .19W 1.8 Max D	1
▲	10	1056979	Harness, Wire, Alarm / Light [T16]	1
▲	11	10632- 18	Grommet, Rbr, 0.69ID, F/1.0H, .25 Matl	1
▲	12	398526	Relay, 36VDC, 005A, SPDT NO [Greenwich]	1
▲	13	1020341	Screw, Hex, M8 X 1.25 X 20, SS, SEMS	1
▲	14	06933	Screw, Pan, Phl, M5 X 0.80 X 16, 4.8	2
▲	15	19066	Washer, Flat, 0.25B 0.56D .05, PL, 10	2
▲	16	06549	Nut, Hex, Lock, M5 X 0.80, NL	2
▲	17	1020341	Screw, Hex, M8 X 1.25 X 20, SS, SEMS	1
▲	18	1062106	Cover, Module, Light	1
▲	19	1059342	Light Assy, LED	1
▲	20	222267	Screw, Pan, Phl, 06- 20 X 0.50, FMG/AB	6
▲	21	377084	Switch, Rocker, Prgrsv	1
▲	22	1064191	Boot, Circuit Breaker	2
▲	23	55272	Terminal, Bullet, Mal, .157D, 12Ga	2
▲	24	C080140	Sleeve, Vyl, Flex, .23ID, Bulk (6 in)	1
▲	25	1064188	Circuit Breaker, 15.0a, Resettable	1

TENNANT COMPANY
P. O. Box 1452
Minneapolis, MN 55440-1452